

Off-line Filter Unit with DC motor

# FNA 014

Operating pressure up to 4 bar / 58 psi · Nominal flow rate up to 14 l/min / 4.2 gpm · 24 VDC electric motor S1 duty cycle



FNA 014 Off-line Filtration Unit



EXAPOR®MAX 2 Filter Element

## Description

The FNA 014 is an off-line filter unit designed for installation in hydraulic or lubrications systems. The unit can be equipped with a 24 or 12 VDC electric motor. The EXAPOR®MAX 2 ultra-fine filter element is the heart of the FNA 014. A high separation efficiency guarantees excellent fluid cleanliness levels and thereby maximum protection of the machine. Optionally, the unit can be equipped with EXAPOR® AQUA elements which remove both water and solid particles. The high dirt holding capacity of the filter elements makes the FNA 014 an economical choice for our customers.

## Characteristics

### Pump design

Gerotor pump

### Hydraulic fluids

Mineral oil and biodegradable fluids (HEES and HETG, see info service sheet 00.20). Other fluids on request.

### Temperature range of fluids

0 °C ... +65 °C / +32 °F ... +149 °F

### Ambient temperature range

0 °C ... +50 °C / +32 °F ... +122 °F

### Viscosity range

15 - 200 mm<sup>2</sup>/s - continuous operation  
15 - 400 mm<sup>2</sup>/s - short-term operation

### Operating position

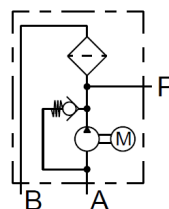
Vertical, motor at the bottom

### Recommended tank capacities

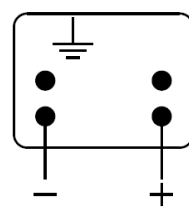
100 l ... 1500 l / 25 ... 400 gal

## Symbols / Connections

### 1. Hydraulic



### 2. Electric\*



\* Current consumption (tested with oil VG 46, temp. +20 °C / +68 °F):  
- free flow, no. filter element: 5 A  
- closed flow (by-pass valve opened): 10 A

Technical data	
Nominal flow rate	up to 14 l/min / 3.7 gpm
Operating pressure	max. 4 bar / 58 psi
Filter fineness (Bx(c) = 200 according to ISO 16889:1999)	3 µm EXAPOR®AQUA 7 µm
Dirt-holding capacity	up to 280 g
Water capacity	up to 340 ml
Electric motor*	24 VDC; 280 W; S1
Suction port (inlet)**	G¾
Pressure port (outlet)**	G½
Suction height max.	1.5 m / 4.9 ft
Weight	approx. 11 kg / 24.3 lbs
Recommended clogging indicator	DG 200-16 Others: see data sheet 60.20

Order code	
FNA 014-16553	3 µm EXAPOR®MAX 2 element
FNA 014-16555	7 µm EXAPOR®AQUA element

Other versions available on request.

Spare filter element code	Fineness Bx(c) = 200	Dirt / water capacity at 14 l/min / 3.7 gpm
V7.1220-113	3 µm	280 g
V7.1220-13	5 µm	270 g
V7.1220-06	10 µm	240 g
EXAPOR®AQUA for filtration combined with dewatering		
Y7.1220-05	7 µm	120 g / 340 ml
Y7.1220-113	3 µm	190 g / 300 ml

\* Version with 12 VDC motor available on request.

\*\* Versions with UNF ports available on request.

## Dimensions

