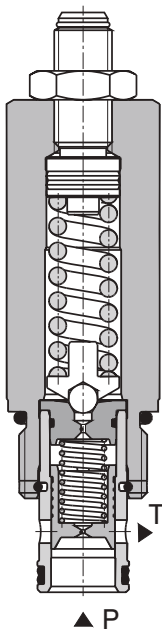


Pressure Relief Valve, Spool Type, Pilot Operated

SR4A-B2

7/8-14 UNF • Q_{max} 100 l/min (26 GPM) • p_{max} 350 bar (5100 PSI)



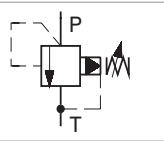
Technical Features

- › Low hysteresis, accurate pressure control and low pressure drop through CFD optimized flow paths
- › Wide pressure range up to 350 bar
- › High flow capacity
- › Hardened precision parts
- › Ideal for use as control valve where accuracy and repeatability is required
- › Adjustable by allen key hand screw
- › In the standard version, the valve is zinc-coated for 240 h protection acc. to ISO 9227

Functional Description

A pilot operated, spool type hydraulic relief valve in the form of a screw-in cartridge intended for use as a pressure limiting device. Fast-acting with low hysteresis. Because of the absence of any internal seals, the valve shows excellent reseating and repeatability characteristics. It may be used as a main pressure control element but due to its two stage design it is not recommended for safety applications where operating speed is critical.

Symbol

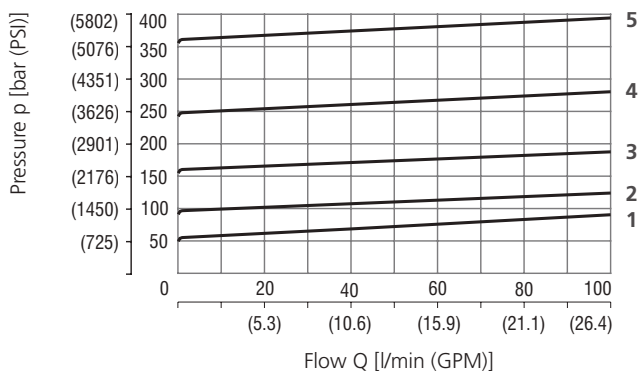


Technical Data

Valve size / Cartridge cavity		7/8-14 UNF-2A / B2 (C-10-2)	
Max. flow	l/min (GPM)	100 (26)	
Max. operating pressure	bar (PSI)	350 (5080)	
Max. pressure (T port)	bar (PSI)	100 (1450)	
Fluid temperature range (NBR)	°C (°F)	-30 ... +100 (-22 ... 212)	
Fluid temperature range (FPM)	°C (°F)	-20 ... +120 (-4 ... 248)	
Weight	kg (lbs)	0.24 (0.53)	
		Datasheet	Type
General information		GP_0060	Products and operating conditions
Valve bodies	In-line mounted	SB_0018	SB-B2*
	Sandwich mounted	SB-04(06)_0028	SB-*B2*
Cavity details / Form tools		SMT_0019	SMT-B2*
Spare parts		SP_8010	

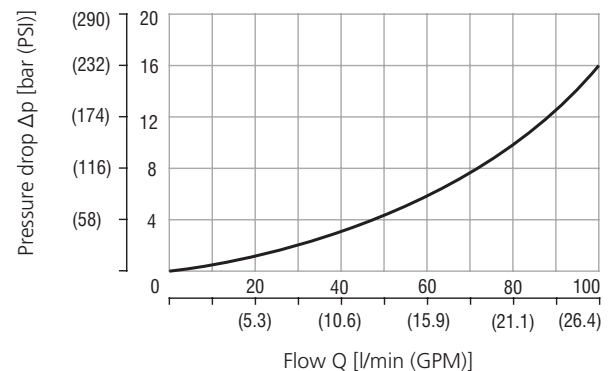
Characteristics measured at $v = 32 \text{ mm}^2/\text{s}$ (156 SUS)

Relief pressure related to flow rate



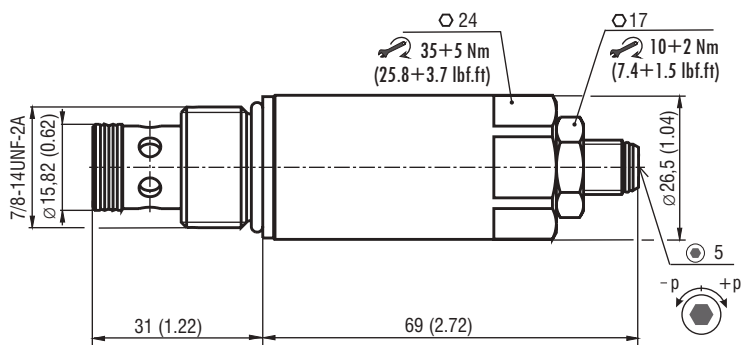
	Pressure range
5	35
4	25
3	16
2	10
1	6

Minimum set and circulation pressure

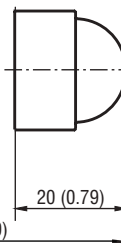


Dimensions in millimeters (inches)

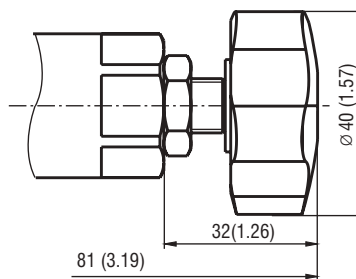
Model S



Model T



Model RP



Ordering Code

SR4A-B2 / H [] [] [] - []

Pressure relief valve, spool type, pilot operated

Valve cavity
7/8-14 UNF (C-10-2)

Model
High performance

Pressure range
up to 63 bar (910 PSI) **6**
up to 100 bar (1450 PSI) **10**
up to 160 bar (2320 PSI) **16**
up to 250 bar (3630 PSI) **25**
up to 350 bar (5080 PSI) **35**

Surface treatment
A zinc-coated (ZnCr-3), ISO 9227 (240 h)
B zinc-coated (ZnNi), ISO 9227 (520 h)

No designation
V

Seals
NBR
FPM (Viton)

Adjustment option
allen key (hex. 5), without protective cap
allen key (hex. 5), with protective cap
hand screw, plastic

S
T
RP