



## FA3 SERIES

Flange mounted with spin-on element

### TECHNICAL INFORMATION

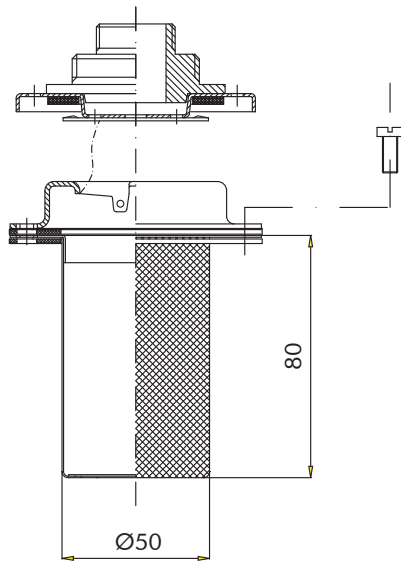
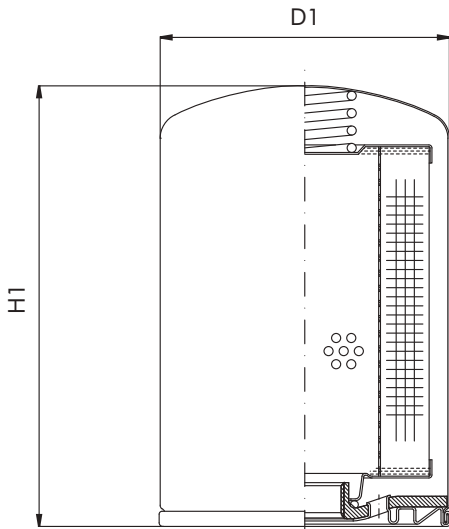
**MATERIALS:** Canister: painted steel  
Flange and basket: zinc plated steel  
Gaskets: NBR

**FILTER MEDIA:** Cellulose (air filtration 3  $\mu\text{m}$ )  
Glassfiber (air filtration 1  $\mu\text{m}$ )

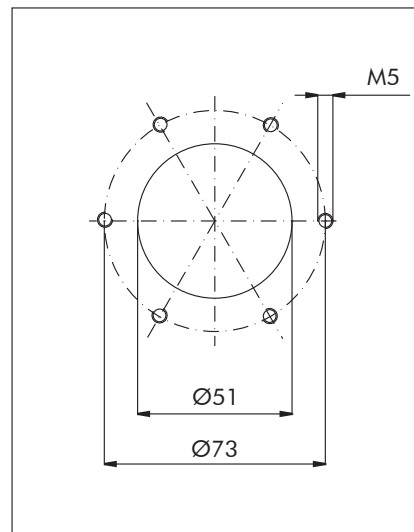
### ORDERING INFORMATION

	1.	2.	3.
SPARE ELEMENT:	<b>FA3</b> <b>A3</b>	<b>20</b> <b>20</b>	<b>C03</b> <b>C03</b>
1. SERIES	FA3		
2. SIZE	WE	base assembly, without spin-on	
	10-11		
	20-21		
3. FILTER MEDIA	---	for WE only	
	C03	cellulose (air filtr. 3 $\mu\text{m}$ )	
	G01	glassfiber (air filtr. 1 $\mu\text{m}$ )	

**OVERALL DIMENSIONS**



TANK MOUNTING  
PATTERN  
(DIN 24557/2)



**NOMINAL SIZE**

CODE	D1	H1	AIR FLOW RATE NI/min Dp 0,015 barg		SPIN-ON ELEMENT
			C03	G01	
FA310	96	145	550	530	A310
FA311		213			A311
FA320	129	180	1415	1330	A320
FA321		228			A321

## USER INFORMATION

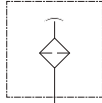
---

The air breather filters are integral part of the filtration within the hydraulic system, as they retain the environment contamination that could enter into the reservoir with the air sucked due to the oil level fluctuations during the system operation.

Our wide range of air filter and filler breathers offers the suitable solution to various requirements.

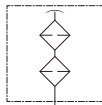
---

HYDRAULIC SYMBOL:  
**FB1 / FT6 / FT7**




---

HYDRAULIC SYMBOL:  
**FT5 / FT8 / FB2 / FA3**




---

OPERATING TEMPERATURE RANGE:      -25° + 100°C (-13°F +212°F)  
**FT / FB1 / FA3 / FB2**

---

FLUID COMPATIBILITY:  
**FT / FB1 / FA3 / FB2**

Full with HH-HL-HM-HV (acc. To ISO 2943).  
 For use with other fluid please contact Filtrec Customer Service  
 (info@filtrec.it).

---