



**FB1 SERIES**

Air breather filters, with replaceable filter element

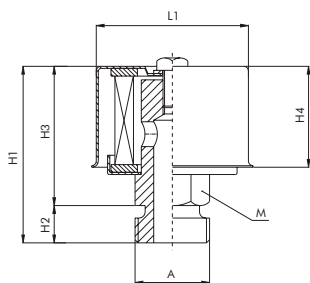
**TECHNICAL INFORMATION**

MATERIALS:	Cover: painted steel
FILTER MEDIA:	Cellulose (air filtration 3 μm)

**ORDERING INFORMATION**

	1.	2.	3.	4.
SPARE ELEMENT:	<b>FB1</b>	<b>10</b>	<b>B2</b>	<b>C10</b>
	<b>B1</b>	<b>10</b>	-	<b>C10</b>
1. SERIES	FB1			
2. SIZE	10	cover Ø 48		
	20	cover Ø 67		
	30	cover Ø 108		
3. CONNECTION	B1	G 1/4"	size 10	
	B2	G 3/8"		
	B3	G 1/2"	size 20	
	B4	G 3/4"		
	B5	G 1"	size 30	
4. FILTER MEDIA	C10	cellulose (air filtration 3 μm)		

**OVERALL DIMENSIONS**



**NOMINAL SIZE**

CODE	A	H1	H2	H3	H4	L1	M	AIR FLOW RATE Nl/min Dp 0,015 barg
FB110	G 1/4" - 3/8"	54	9	45	32	48	14/19	250
FB120	G 1/2" - 3/4"	69	10	59	50	67	22	350
FB130	G 1"	91	15	76	61	108	34	800

